

SUSTAINABILITY POLICY

TALL SHIPS HARTLEPOOL

OUR AIMS AND OBJECTIVES

Raise awareness of sustainability initiatives

Ensure all stakeholders, including visitors, are aware of the sustainability policy and what it means to their decision-making process and requirements.

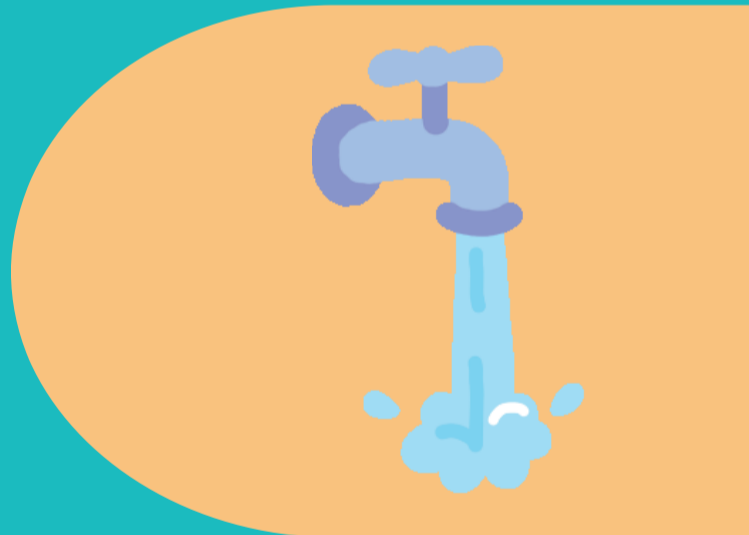


Reduce energy & carbon intensity

Reduce energy consumption during the event through intervention and behaviour change. Consider low-carbon menus and carbon offsetting.

Limit water consumption and waste

Water is one of the most important elements for the preservation of life and most of us are almost unaware of how much water we waste on a daily basis. Water conservation can go a long way!



Promote sustainable & active travel

Promoting healthy and sustainable transport options is not just better for the planet but also for our health

100% plastic free

Plastic waste does not decompose and can last in landfill for many years. It is also toxic to the marine environment, and can infiltrate our bodies in the form of micro-plastics.



Implement the waste hierarchy

Apply a systematic order of managing waste according to what's best for the environment. Rethink our relationship with waste based on these five priorities!

PREVENTION

RE-USE

RECYCLE

RECOVER

DISPOSAL

100% material separation of waste

Effective and efficient waste separation starting at the source makes life easier further down the processing line. Separating the different elements found in waste streams is crucial for recovering valuable materials, minimising the amount of material sent to landfills, and repurposing recyclable materials.



Source locally & support local businesses

Local businesses build a stronger economy and a stronger community. Support local businesses to improve relationships between small businesses to create a cohesive and welcoming community identity.



Accessibility

Ensure that everyone has a fantastic time! Make sure that every component of the event is accessible to every single participant.

Diversity, inclusion & fair working conditions

Make sure all voices are heard and that everyone feels welcome regardless of their identity and status. Always consider the full breadth of diversity.



HARTLEPOOL
BOROUGH COUNCIL